

PYY Antibody (C-term)
Affinity Purified Rabbit Polyclonal Antibody (Pab)
Catalog # AP5103B

Specification

PYY Antibody (C-term) - Product Information

Application	FC, IF, IHC-P, WB,E
Primary Accession	P10082
Reactivity	Human
Host	Rabbit
Clonality	Polyclonal
Isotype	Rabbit IgG
Calculated MW	11145
Antigen Region	67-94

PYY Antibody (C-term) - Additional Information

Gene ID 5697

Other Names

Peptide YY, PYY, PYY-I, PYY

Target/Specificity

This PYY antibody is generated from rabbits immunized with a KLH conjugated synthetic peptide between 67-94 amino acids from the C-terminal region of human PYY.

Dilution

FC~~1:10~50

IF~~1:10~50

IHC-P~~1:10~50

WB~~1:1000

E~~Use at an assay dependent concentration.

Format

Purified polyclonal antibody supplied in PBS with 0.09% (W/V) sodium azide. This antibody is purified through a protein A column, followed by peptide affinity purification.

Storage

Maintain refrigerated at 2-8°C for up to 2 weeks. For long term storage store at -20°C in small aliquots to prevent freeze-thaw cycles.

Precautions

PYY Antibody (C-term) is for research use only and not for use in diagnostic or therapeutic procedures.

PYY Antibody (C-term) - Protein Information

Name PYY

Function This gut peptide inhibits exocrine pancreatic secretion, has a vasoconstrictory action and inhibits jejunal and colonic mobility.

Cellular Location

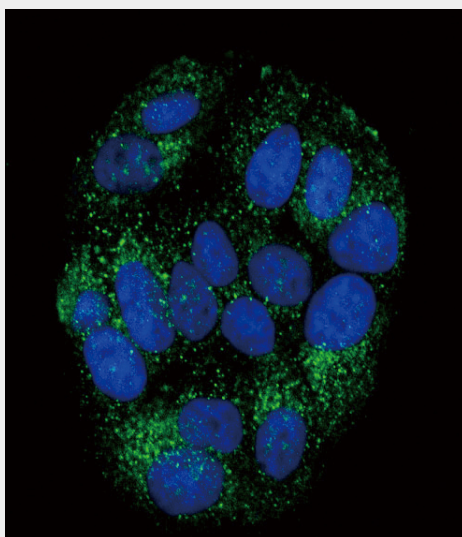
Secreted.

PYY Antibody (C-term) - Protocols

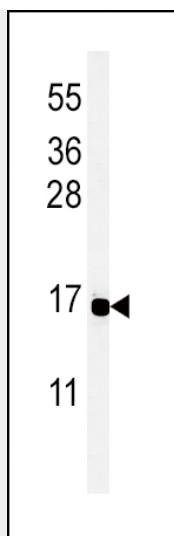
Provided below are standard protocols that you may find useful for product applications.

- [Western Blot](#)
- [Blocking Peptides](#)
- [Dot Blot](#)
- [Immunohistochemistry](#)
- [Immunofluorescence](#)
- [Immunoprecipitation](#)
- [Flow Cytometry](#)
- [Cell Culture](#)

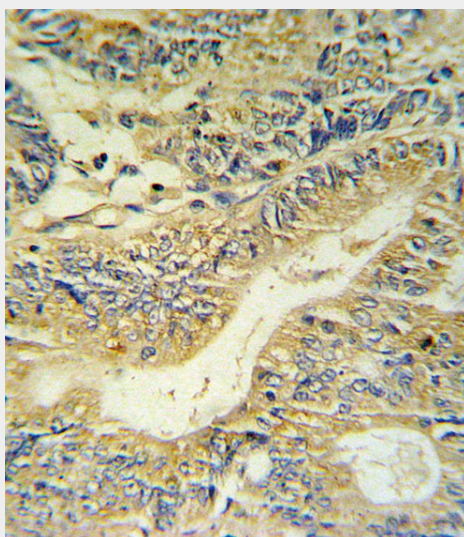
PYY Antibody (C-term) - Images



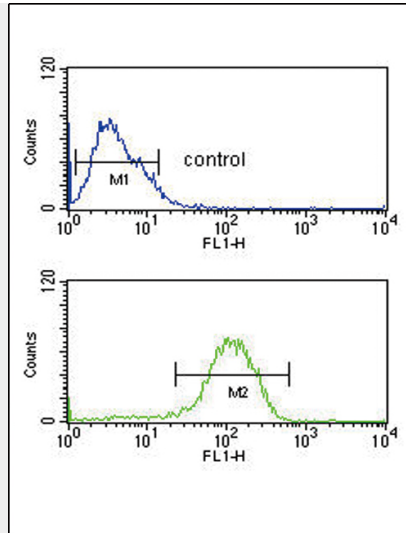
Confocal immunofluorescent analysis of PYY Antibody (C-term)(Cat. #AP5103b) with MCF-7 cell followed by Alexa Fluor 488-conjugated goat anti-rabbit IgG (green). DAPI was used to stain the cell nuclear (blue).



Western blot analysis of PYY Antibody (C-term) (Cat. #AP5103b) in MCF-7 cell line lysates (35ug/lane). PYY (arrow) was detected using the purified Pab.



PYY Antibody (C-term) (Cat. #AP5103b) IHC analysis in formalin fixed and paraffin embedded colon carcinoma followed by peroxidase conjugation of the secondary antibody and DAB staining. This data demonstrates the use of the PYY Antibody (C-term) for immunohistochemistry. Clinical relevance has not been evaluated.



PYY Antibody (C-term) (Cat. #AP5103b) flow cytometric analysis of MCF-7 cells (bottom histogram) compared to a negative control cell (top histogram). FITC-conjugated goat-anti-rabbit secondary antibodies were used for the analysis.

PYY Antibody (C-term) - Background

PYY gut peptide inhibits exocrine pancreatic secretion, has a vasoconstrictory action and inhibits jejunal and colonic mobility.

PYY Antibody (C-term) - References

Ueda, S.Y., et al. J. Endocrinol. 203(3):357-364(2009)
Shih, P.A., et al. J. Clin. Endocrinol. Metab. 94(11):4557-4566(2009)
Gratacos, M., et al. Am. J. Med. Genet. B Neuropsychiatr. Genet. 150B (6), 808-816 (2009)

PYY Antibody (C-term) - Citations

- [G protein \$\beta\$ subunits inhibit TRPM3 ion channels in sensory neurons.](#)